



SAILING INSTRUCTIONS

1. RULES

- 1.1. The Regatta will be governed by the rules as defined in the Racing Rules of Sailing
- 1.2. Equipment Rules of Sailing 2017-2020 will apply.
- 1.3. World Sailing Offshore Special Regulations appendix b, Special Regulations for Inshore Racing will apply.
- 1.4. ORC Rating Rules will apply.
- 1.5. Any self-steering devices are prohibited.
- 1.6. No national prescriptions will apply.
- 1.7. The Official Languages of the Regatta are English and Romanian. If there is a conflict between languages, the English text will take precedence.

2. NOTICES TO COMPETITORS

- 2.1. Notices to competitors will be posted on the official notice board located at Marina Life Harbour - Limanu.

3. CHANGES TO SAILING INSTRUCTIONS

- 3.1. Any change to the sailing instructions will be posted before 0900 on the day it will take effect, except that any change to the schedule of races will be posted by 2200 on the day before it will take effect.

4. SIGNALS MADE ASHORE

- 4.1. Signals made ashore will be displayed at Marina Life Harbour Limanu.
- 4.2. When flag AP is displayed ashore, '1 minute' is replaced with 'not less than 60 minutes' in the race signal AP.
- 4.3. When flag Y is displayed ashore, rule 40 applies at all times while afloat. This changes the Part 4 preamble.

5. SCHEDULE OF RACES

- 5.1. Dates of racing and Number of races:
 - 8th of July 2017, 10:55 first warning signal, one offshore race for all classes
 - 9th of July 2017, 10:55 first warning signal, three inshore races for all classes



- 5.2. On 9th of July, no warning signal will be given after 15:30, but to continue a general recalled race in progress.

6. CLASS FLAGS

Class flags will be:

Class	Flag
ORC A	W
ORC B	T
ORC C	R
All classes	O

7. RACING AREAS

Racing area will be the Romanian Coast of the Black Sea with the starting line positioned close to Mangalia Harbour.

8. THE COURSES

The diagrams in Addendum A show the courses, the order in which marks are to be passed, and the side on which each mark is to be left and the approximate course legs length.

9. MARKS

- 9.1. Course marks will be YELLOW inflatable buoys. The replacement marks will be RED.
- 9.2. The starting mark will be RED inflatable buoy.
- 9.3. The finishing mark will be BLUE inflatable buoy.
- 9.4. Windward Mark (WM) for the offshore course only will be RED.
- 9.5. RC may set a windward mark to obtain a start to windward, if necessary. If the windward mark is set, it will be approximately 0.75 NM from the starting area and the RC will, before the warning signal, display a RED flag which indicates the mark shall be left to port, or a GREEN flag indicating the mark shall be left to starboard.
- 9.6. If no red or green flag is displayed, there is no “windward mark” and the start will go directly to the first mark as defined in the course diagram.

10. AREAS THAT ARE OBSTRUCTIONS



The following areas are designated as obstructions:

- entrance in the Mangalia Port south from the North Breakwater,
- all the navigation and meteorological buoys in the racing area.

11. THE START

- 11.1. Races will be started by using rule 26 with the warning signal made five minutes before the starting signal.
- 11.2. To alert boats that a race or sequence of races will start soon, the orange starting line flag will be displayed (with one sound signal) at least five minutes before a warning signal is displayed.
- 11.3. The starting line will be between a staff displaying an orange flag on the starting boat at the starboard end and the course side of the port-end starting mark.
- 11.4. Boats whose warning signal has not been made shall avoid the starting area during the starting sequence for other races.
- 11.5. A boat starting later than five minutes after her starting signal will be scored Did Not Start without a hearing. This changes rule A4.
- 11.6. Before the warning signal, RC will announce on VHF and/or may display on a board the course code to be sailed, approximate bearing, distance and GPS position for the first mark.
- 11.7. After signalling an individual recall, the RC may broadcast the sail number or bow number or name of the boats identified as OCS on VHF but not earlier than 30 seconds after the starting signal. A failure or delay or the order of the broadcast will not be grounds for a request for redress. This changes RRS 62.1(a).

12. CHANGE OF THE NEXT LEG OF THE COURSE

- 12.1. To change the next leg of the course, the race committee will lay a new mark in the new position (or move the finishing line) and remove the original mark when possible. When in a subsequent change a new mark is replaced it will be replaced by an original mark. If a new mark will replace MARK 1, no new MARK 1a will be laid.
- 12.2. Except at a gate, boats shall pass between the race committee boat signalling the change of the next leg and the nearby mark, leaving the mark to port and the race committee boat to starboard. This changes rule 28.
- 12.3. If Flag F is displayed (no sounds) at any mark, that mark shall be left on the required side and boats shall then proceed directly to the FINISH, leaving out any further marks of the course.

13. THE FINISH



- 13.1. The finishing line will be between a staff displaying an blue flag on the finishing boat and the course side of the finishing mark.
- 13.2. If the race committee is absent when a boat finishes, she should report her finishing time, and her position in relation to nearby boats, to the race committee at the first reasonable opportunity.

14. PENALTY SYSTEM

- 14.1. Rule 44.1 is changed so that the Two-Turns Penalty is replaced by the One-Turn Penalty.

15. TIME LIMITS AND TARGET TIMES

- 15.1. Time limits and target times are as follows:

Class	Course	Time limit	Target time
ORC A	Inshore	100 min	50 min
ORC B	Inshore	100 min	50 min
ORC C	Inshore	100 min	50 min

ORC A	Offshore	9 hours	5 hours
ORC B	Offshore	9 hours	5 hours
ORC C	Offshore	9 hours	5 hours

- 15.2. Failure to meet the target time will not be grounds for redress. This changes rule 62.1(a).

16. PROTESTS AND REQUESTS FOR REDRESS

- 16.1. Protest forms are available at the race office, located at Marina Limanu. Protests and requests for redress or reopening shall be delivered there within the appropriate time limit.
- 16.2. The protest time limit is 60 minutes after the last boat has finished the last race of the day or the race committee signals no more racing today, whichever is later.
- 16.3. Notices will be posted no later than 30 minutes after the protest time limit to inform competitors of hearings in which they are parties or named as witnesses. Hearings will be held in the protest room, located at Marina Limanu, beginning at the time posted.
- 16.4. Notices of protests by the race committee or protest committee will be posted to inform boats under rule 61.1(b).
- 16.5. Breaches of instructions 18.1, 18.2, 18.3, 21, 23, 24, 25, 26, 27.1 and 27.2 will not be grounds for a protest by a boat. This changes rule 60.1(a). Penalties for these breaches may be less than disqualification if the protest committee so decides.






- 16.6. On the last scheduled day of racing a request for reopening a hearing shall be delivered
 - (a) within the protest time limit if the requesting party was informed of the decision on the previous day;
 - (b) no later than 15 minutes after the requesting party was informed of the decision on that day.

This changes rule 66.

- 16.7. On the last scheduled day of racing a request for redress based on a protest committee decision shall be delivered no later than 30 minutes after the decision was posted. This changes rule 62.2.
- 16.8. In addition to complying with RRS 61, a protesting boat shall inform immediately after finishing or retiring, by VHF, the RC of her intention to protest and the identity of the protested boat(s) and receive confirmation from the RC. This changes rule 61.1(a).

17. SCORING

- 17.1. The Low Point Scoring System of RRS Appendix A will apply. Inshore races will have scoring coefficient of 1.00 and offshore race will have scoring coefficient of 1.20.
- 17.2. One race is required to be completed to constitute a series.
- 17.3. When fewer than four races have been completed, a boat's series score will be the total of her race scores.
- 17.4. When four or more races have been completed, a boat's series score will be the total of her race scores excluding her worst score. The offshore race score will not be excluded.
- 17.5. Inshore races results will be determined by corrected times calculated by Triple-Number method. Before the warning signal of each inshore race the RC will display one of the following flags and/or will display {L, M, H} on a board to indicate the provisional scoring method:

Wind	Flag	Notice on board
Light	Numeral one 	L
Medium	Numeral two 	M
High	Numeral three 	H

If there is a substantial change in wind speed during the race, the RC may decide to use a different time correction. This will be indicated by displaying the appropriate flag or letter on the finishing vessel. Any decision by the race committee in connection with the application of the Triple Number System will be no ground for redress. This changes RRS 62.1(a).



- 17.6. Offshore race results will be determined by corrected times calculated using ORC Offshore ToT .

18. SAFETY REGULATIONS

- 18.1. A boat that retires from a race shall notify the race committee as soon as possible.
- 18.2. VHF radios are mandatory for all races. A marine VHF transceiver shall be carried, function properly and be readily accessible all times.
- 18.3. Any use of the engine for propulsion purposes for rescuing people, giving help or any other reason shall be reported after arrival in written form to the RC stating reasons for such procedure.

19. REPLACEMENT OF CREW OR EQUIPMENT

- 19.1. Substitution of competitors will not be allowed without prior written approval of the race committee.
- 19.2. Substitution of damaged or lost equipment will not be allowed unless authorized by the race committee. Requests for substitution shall be made to the committee at the first reasonable opportunity.

20. EQUIPMENT AND MEASUREMENT CHECKS

A boat or equipment may be inspected at any time for compliance with the class rules and sailing instructions. On the water, a boat can be instructed by a race committee equipment inspector or measurer to proceed immediately to a designated area for inspection.

21. EVENT ADVERTISING

Boats shall display event advertising supplied by the organizing authority.

22. OFFICIAL BOATS

Official boats will be marked as follows:

“RC” for Race Committee boats;

“Jury” for Protest Committee boats;

23. SUPPORT BOATS

Team leaders, coaches and other support personnel shall stay outside areas where boats are racing from the time of the preparatory signal for the first class to start until



all boats have finished or retired or the race committee signals a postponement, general recall or abandonment. Exception will be granted to media/press boats marked with "Media" flag.

24. TRASH DISPOSAL

Trash may be placed aboard support or official boats.

25. HAUL-OUT RESTRICTIONS

Keelboats shall not be hauled out during the regatta except with and according to the terms of prior written permission of the race committee.

26. DIVING EQUIPMENT AND PLASTIC POOLS

Underwater breathing apparatus and plastic pools or their equivalent shall not be used around keelboats between the preparatory signal of the first race and the end of the regatta.

27. RADIO COMMUNICATION

- 27.1. Radio communication with RC during the regatta will be on VHF channel 10. The RC may give verbal confirmation of any race signal over VHF. Failure to make a broadcast or to time it accurately will not be grounds for redress. This changes RRS 62.1(a).
- 27.2. Except in an emergency, a boat shall neither make radio transmissions while racing nor receive radio communications not available to all boats. This restriction also applies to mobile telephones.

28. PRIZES

It will be awarded trophies and medals for the first, second and third place in each class.

29. DISCLAIMER OF LIABILITY

Competitors participate in the regatta entirely at their own risk. See rule 4, Decision to Race. The organizing authority will not accept any liability for material damage or personal injury or death sustained in conjunction with or prior to, during, or after the regatta.

30. INSURANCE



All owners / skippers are responsible to have the third party liability insurance valid insurance in excess of two million euro.

Fair wind,
Race Officer
Cosmin ANDRONIC IRO/ROUCA1

ADDENDUM A

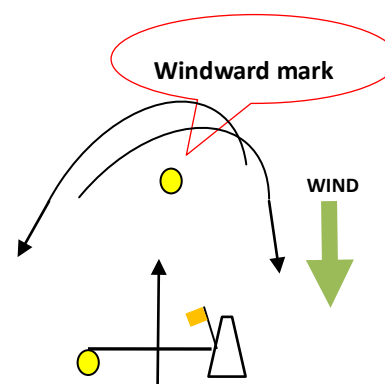
ILLUSTRATING THE COURSES

The starting/finishing area will be in front of Mangalia Port.

This drawings are a schematic. The distances and mark positions are not to scale. Their physical location may vary depending on wind, currents and sea state conditions.

1. OFFSHORE COURSE

GPS coordinates are in format degree and decimal minutes. Marks coordinates are approximate.



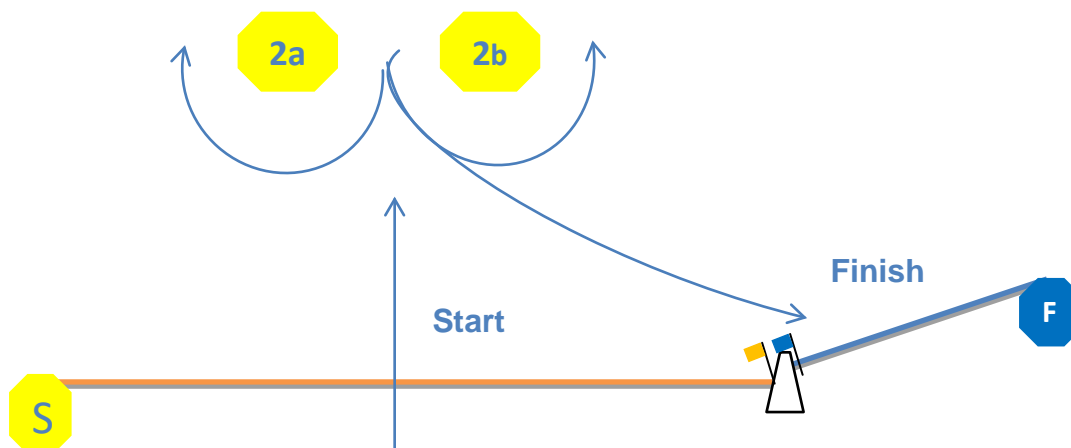
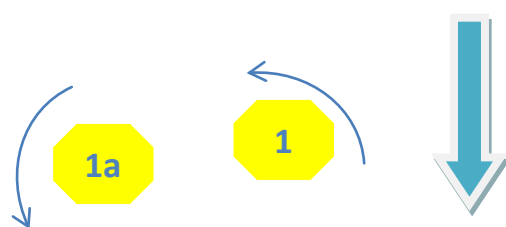
Mark 1	43° 47.500' N 028° 44.000' E
Mark 2	43° 56.500' N 028° 40.500' E

Aproximatives distances	
1-2	9.35NM
Start-1	5.25 NM
Start-2	9.1 NM

Course Code Course to be sailed, where WM = Windward Mark

L1	START - [WM] - 1 (port) - FINISH
L2	START - [WM] - 2 (port) - FINISH
T1	START - [WM] - 1 (port) - 2 (port) - FINISH
T2	START - [WM] - 2 (starboard) - 1 (starboard) - FINISH
S1	START - [WM] - 1 (port) - 2 (port) - 1 (starboard) - FINISH
S2	START - [WM] - 2 (starboard) - 1 (starboard) - 2 (port) - FINISH
S3	START - [WM] - 1 (port) - 2 (port) - 1 (port) - 2 (port) - FINISH

2. INSHORE COURSES



Course Code	Course to be sailed
R1	Start-1-2b-Finish
R2	Start-1-2a/2b-1-2b-Finish
R3	Start-1-2a/2b-1-2a/2b-1-2b-Finish
RA1	Start-1-1a--2b-Finish
RA2	Start-1-1-2-2b-1-1-2b-Finish